



Corby Business Academy

COMMIT BELIEVE ACHIEVE



SIXTH FORM PROSPECTUS 2022-2023

A valued member of the





Contents

4-5	Welcome from the Principal	20	BTEC Level 3 - Health and Social Care
6-7	Welcome from the Sixth Form Team		A-Level History
8	Sixth Form at Corby Business Academy	21	OCR Cambridge Technicals in IT (Level 3)
9	Every Student Matters: Destination and Support		A-Level Maths
10-11	Enrichment	22	A-Level Further Maths
12-13	Choosing your course		A-Level Media
14	Course Information - A-Level Art & Design (Fine Art)	23	A-Level Music
15	A-Level Biology		A-Level Physics
	A-Level Business	24	A-Level Psychology
16	BTEC Level 3 - Business		BTEC Level 3 - Applied Psychology
	A-Level Chemistry	25	OCR Cambridge Technicals in Applied Science (Level 3)
17	A-Level Computer Science		A- Level Spanish
	BTEC Level 3 - Performing Arts (Dance)	26	BTEC Level 3 - Sport
18	A-Level Drama & Theatre	27-29	Student Voice
	A-Level English Literature & Literature	30-31	Sixth Form Admissions Application Form 2022-2023
19	A-Level French	32	Alumni
	A-Level Geography	33	Contact Information



Aspirations for all students' academic excellence and potential

Exceptional range of high quality student destinations

Outstanding staff and student relationships, which focus on holistic development

Welcome from the Principal

I am delighted that you are considering joining our Sixth Form for the next two years. Studying with us at Corby Business Academy will provide you with high quality teaching and allow you to experience many outstanding opportunities.

As you contemplate options post-GCSE and Level 2 studies, there is a wide range of choices available. Choosing a Further Education institution and subjects can feel daunting at this important time,

please ensure you take advantage of the experienced and knowledgeable staff at the Academy. We are passionate about ensuring students have all the information required to make informed decisions about their future.

At Corby Business Academy you have an opportunity to join a Sixth Form that can offer students:

- High quality teaching & learning
- Excellent facilities
- Outstanding student care and guidance
- Exceptional preparation for a university or career based pathway

For those who choose to study with us, I am certain that our growing Sixth Form provides a wealth of benefits.

Last academic year, the majority of our students acquired a place at their first choice university. We also have an ever-increasing range of destinations for students who want to join the world of work.

Students are always the focal point at Corby Business Academy.

Every decision is centred on maximising their potential and opening up a lifetime of opportunities. Ofsted findings confirm that students receive an excellent provision. Staff at the Academy are passionate about academic success and achieving

outcomes that reflect students' potential. Should you choose to study with us, you will be encouraged to work hard and expectations are high. However, you will be supported in every element of Academy life; this includes a highly planned and effective induction process that allows students to quickly settle and focus on their studies.

Please ensure you take time to gain as much information as you need, our dedicated team of staff can support with any enquiry. I hope you choose to join us at Corby Business Academy and look forward to being part of your journey towards success.

Simon Underwood
Principal



Welcome from the Sixth Form Team

Making decisions about studying after GCSEs is the most important decision you will make with regards to your education. We will support and help you to make the right choices. As part of the admissions process you will receive a personal interview with a member of the Senior Leadership Team to help you make the right choices.

We will also support you on GCSE results day to ensure you are choosing subjects that you enjoy, are relevant and that offer you the potential to excel.

You will soon discover that Sixth Form really can be seen as a new chapter in your life. Intelligence is important, but a more consistent measure of attainment and performance is attitude.

Work ethic, motivation and resilience are the key characteristics that define successful individuals.

We look forward to helping you grow these characteristics so you can achieve results that you might not have thought possible before.

We are very proud of the Sixth Form. Our results and destinations data certainly speak for themselves.

The temptation at post GCSEs is always to look at other options in the area. For some students seeking a particular vocational route this might be the right decision. However, we know from experience with students who have tried other provision briefly and then reapplied to Corby Business Academy, that the grass isn't always greener elsewhere.

The strength of Corby Business Academy is that the staff already have strong relationships with students and are prepared to work tirelessly with individuals to help them reach their potential.



Ralph Franklin
Vice Principal responsible
for Sixth Form

Here at Corby Business Academy we provide our Sixth Form with a high quality and exciting curriculum, which includes both academic and vocational courses. Our detailed tutor programme offers challenge, individual development and pastoral support, with a clear focus on preparing students for their next steps.

The Academy encourages all students to take part in enrichment activities. These may include, among others, The Duke of Edinburgh's Award, Literacy and Numeracy Mentoring, Mental Health Ambassadors, Young Enterprise and the Extended Project. Our aim is for every students to gain the skills, qualifications and experiences to make the best possible transition to higher education or the world of work. They will be guided through their time with us by a dedicated team of staff who will support and encourage them in every element of Academy life.

In Year 12, all students will participate in a work experience placement to support their next steps.

We have high expectations of all Sixth Form students. We expect them to inspire the lower school and to lead by example. There will be opportunities to have an impact on the wider life of the Academy through the roles of Head Boy and Girl, as an ambassador on the Senior Student Team, leading assemblies and presenting to smaller groups of younger students.

As a Sixth Form student you will be expected to work hard inside and outside lessons, conduct independent research and show commitment to the Academy's community. In return, we will give you every opportunity to achieve your academic potential and ensure you are fully equipped for the next stage of your life.



Matthew Smith
Deputy Director of Sixth Form



Sixth Form at Corby Business Academy

The Sixth Form is characterised by:

- Ambitious leadership and processes which embody the Academy's aim that everyone can achieve high quality outcomes.
- High aspirational targets for all students.
- Close monitoring and information for students to ensure achievement and progress.
- Courses to suit a range of destinations and pathways.
- Excellent academic standards of teaching and learning.
- Structured support to enable all students to achieve their maximum potential.
- Independent high quality Careers Education, Advice, Information and Guidance (CEIAG) that encourages students to aim high.
- A range of enrichment opportunities to promote personal, spiritual and cultural development.



Dress

Many students will be working alongside employers both in and outside the Academy so smart office wear must be worn (further details will be obtainable via the Academy's website).

Students are expected to attend for the full Academy day, which means they can take advantage of the facilities, resources and help on offer.

Every Student Matters: Destination and Support

Personal Tutorial Support

Sixth Form students are allocated a Personal Tutor who they meet with on a daily basis. They review their targets, attendance and discuss career aspirations. All students follow a comprehensive tutor programme aimed at developing personal qualities, including independent thinking, problem solving skills, debating techniques and in-depth preparation for university or career pathways.

Tracking progress

The Sixth Form Team oversees student performance. Data is used to help set students challenging and achievable targets. Progress reports are sent out throughout the year, which are discussed with Tutors.

Parents/Carers are encouraged to make contact following the report to discuss individual progress. Formal consultation evenings and general communication are also used to ensure information is shared.

Careers and destinations

In Sixth Form, all students have access to external employers and university networks. In Year 13 students are given additional support regarding future aspirations and career progression.

Tutorial sessions are provided to help students with the UCAS application process or those who wish to transfer to a job with further training.

The Academy also employs a careers leader to support students in both the transition into Sixth Form and the later move into university or work.

Business links

We offer unique opportunities to Sixth Form students to enable a better insight into the world of work and develop the skills that employers value. For example, we have strong links with major international businesses.

All students take part in mock interviews with business representatives to give them experience of a professional interview.

Students also have the opportunity to work on a one-to-one basis with a Business Mentor. This professional relationship can support the student in gaining valuable experience of the business environment.

Work Experience

Developing a wide variety of skills is vital to prepare students for their next steps. To support this key element of their education, all Year 12 students will engage in relevant and high quality work experience.

Whilst our careers leader will coordinate the process, the students will be encouraged to take an active role in arranging the placement themselves.

The process will begin in Term 1 with an on-going programme throughout the year culminating in the work placement during Term 6.

In addition students are encouraged to seek further bespoke work experience through their time in sixth form as required.

The Academy will ensure that all companies and organisations have the appropriate insurance and other necessary requirements in place to ensure the safety of all students.

Corby Business Academy meets the needs of a wide range of Sixth Form students

At the Academy we have provision for students with severe learning difficulties and profound and multiple learning difficulties. The Unit provides opportunities to develop their pathways to independent living.

Students follow accreditation including employment, independent living, accessing the local community and enterprise. In addition, there is a strong focus on practical work experience and supporting the transition to college.



Enrichment

The Academy encourages students to participate in a range of activities to help them develop skills outside the classroom.

Head Boy and Girl

Our Head Boy and Girl are proud ambassadors of Corby Business Academy, who represent the Academy at events and open evenings. The roles are appointed following applications and rigorous interviews. The Head Boy and Girl lead the Senior Student Team.

Senior Student Team

This is a select group of Sixth Form students who take a proactive role in Academy life, leading in areas such as sport, mental health and student voice as well as supporting academy events.

Senate

The Sixth Form provides an excellent opportunity for students' views to be heard and help bring about change. This may be in regards to academic or pastoral matters.

In addition, Sixth Form students have supported students in the Unit, helped with fundraising and social activities and been involved in Years 7-11 sporting events.

Peer mentoring

Sixth Form students are regarded as role models for younger students and are expected to make a positive contribution to Academy life. They support younger students through the Literacy and Numeracy Mentoring programme, as well as mental health ambassadors.



Community involvement

As a Business Academy we are asked to support local organisations and activities taking place in the community. Visits and representation at events is an important element of Sixth Form life.

The Extended Project

The Extended Project Qualification (EPQ) is a freestanding qualification that allows students to select a topic and carry out detailed research into that particular area. It is equivalent to 50% of an A-Level qualification.

It requires self-discipline and independent research in an area of students' own choosing, which may be an academic field or other focus of interest.

It is designed to develop learners' critical, reflective, problem-solving and independent learning skills. The Extended Project supports students with the transition into higher education or the world of work. An Extended Project Qualification can often be a 'stand out' element of any CV and may lead to a reduced university offer.

Duke of Edinburgh's Award

The DofE Award encourages students to have self-belief, confidence, independence, responsibility whilst providing them with the opportunity to gain a nationally recognised award. These qualities help students' progress to the next phase of their education or career path. The four areas of the award are: Physical, Skills, Volunteering and Expedition.

The programme challenges students in a different way and is highly valued by universities due to the range of transferable skills students acquire, which also helps prepare students for life and work.

Employment at Corby Business Academy

There are opportunities for paid employment at the Academy, with Sixth Form students working as reception staff, sports co-ordinators and supporting site staff.

At Corby Business Academy we believe in offering our Sixth Form students a host of different experiences to help them develop as confident, able young people who manage the transition between school life and adulthood with ease.

Each student is expected to be involved with extra-curricular activities and the opportunities on offer.



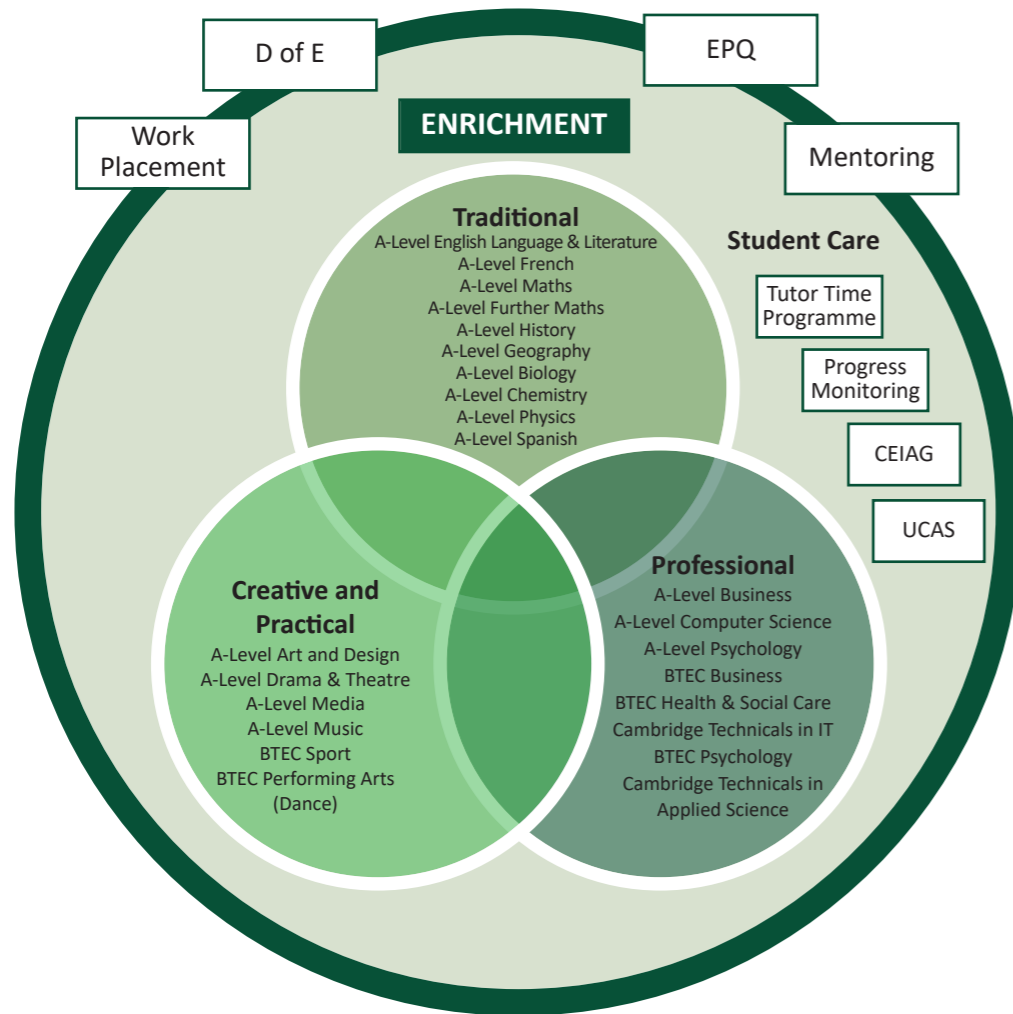
Choosing your course

Post-16 education is a crucial time in your life. What you decide to do now will have an impact on your opportunities in education and employment for many years to come. The best general advice is to choose subjects that you enjoy and can be successful in. It is very important that you choose courses at an appropriate level for you.

Entry to the Sixth Form will depend on a number of factors, including performance at GCSEs and equivalent examinations. All potential Sixth Form students are invited for an interview with the Sixth Form Team or a member of the Senior Leadership Team, where choices are discussed and options explored.

At Corby Business Academy we offer a range of academic and vocational courses. We are committed to developing an academic curriculum that addresses the needs of its students.

We focus on ensuring that students leave with the best possible life chance and pathways.



Enables students to access a range of three A-Level and Applied qualifications.

To participate in The Level 3 Pathway students must achieve:

a total GCSE / Level 2 points entry (best 8 subject grades) of 40 points*

a grade 5 in Maths and English Language or Literature

each subject specific entry requirement

NB: Students who are interested in studying 4 A-Levels will have an opportunity to request this option. Corby Business Academy reserves the right to decline requests based on Level 2 entry measures.

THE LEVEL 3 PATHWAY COURSE

Enables students to access a range Level 3 Applied qualifications only, plus GCSE resits in Maths and English Language or Literature if required.

To participate in The Gateway Pathway students must achieve:

a total GCSE / Level 2 points entry (best 8 subject grades) of 32 points*

a grade 3 in Maths and English Language or Literature

each subject specific entry requirement

NB: The maximum intake to the Gateway Course is 25 students

THE GATEWAY PATHWAY COURSE

The Academy offers a range of tradition, creative, practical and professional Level 3 programmes of study.

We are also dedicated to providing enrichment programmes and high quality student care. Our balanced curriculum allows the development of key skills for high education, training or employment.

Please note that course may be subject to change in light of A-Level and Applied examination reform and changes to specifications. Corby Business Academy Sixth Form is committed to providing the most appropriate course for our students.

The final confirmation of the course offer will be subject to student uptake, timetable arrangements, viable teaching groups and entry requirements being met.

POINTS GUIDANCE

Tables below represent current details of Level 2 points scoring. Please note that, as yet, 2020 points scoring is not available on the DofE site.

GCSE		APPLIED EXAMPLE	
GRADE	POINTS	GRADE	POINTS
9	9		9
8	8	L2 D*	8.5
7	7	L2 D	7
6	6	L2 M	5.5
5	5	L2 P	4
4	4	L1 D	3
3	3	L1 M	2
2	2	L1 P	1.25
1	1		1

Points are allocated from DofE guidance for both GCSE and Applied courses.

The Applied example provided is the current 2019 points for Cambridge National Awards at Level 1 & 2. Please note that other National Awards for Applied courses will acquire points. All qualifications are required to be part of the DofE performance tables in each academic year.



A-Level Art & Design Fine Art

ENTRY REQUIREMENTS:

This course is open to students who have achieved a grade 5 in an Art and Design endorsed subject such as Art, Craft and Design, Photography, Graphics or Fine Art

Description:

Students will engage in a range of traditional and contemporary art processes in order to develop a broad and exciting portfolio of work. The course provides students with the opportunity to experience a deeper understanding of the art world through the development of their ideas and the search for an appropriate means of expression.

Students will focus on building a foundation of skills that include painting and drawing, printmaking, and lens based image making.

These skills are then channelled towards creating their own personal projects ending with an externally set controlled assignment in year two.

Progression:

Students develop the skills and understanding needed to produce a high standard of work for a portfolio, interview or degree.

Many go on to study a wide range of creative degrees or complete a Foundation Diploma in Art and Design at university that help build a portfolio for application on to a specialist Art Degree.

CAREERS:

The creative industries are one of the UK's greatest success stories, with music, art, fashion and film being recognised worldwide. Art is a multi-disciplined pursuit with many potential career opportunities including Arts Administration, Museums, Education or Therapy, Photography, Film, Video, Print, Fashion and Textile Design, Fine Art, Visual Art, Graphic Design, Illustration, Advertising, Architecture and Product Design.

FACULTY : AMID



*For further information please contact
Emily Boyd
Director of Subject for Art and Photography*

A-Level Biology

ENTRY REQUIREMENTS:

This course is open to students who have achieved two grade 6s in GCSE Combined Science and a grade 5 in Maths

or

a grade 6 in Biology and a second Science as well as a grade 5 in Maths

Description:

Students will develop practical skills whilst learning about exchange and transport, biodiversity, evolution and disease, homeostasis and energy, genetics, evolution and ecosystems. Students will also take part in practical endorsements to further strengthen their investigative and research skills for all topics.

Progression:

Students develop a knowledge and understanding of plants and animals coupled with excellent organisational, observational and investigative skills. These key transferable skills are highly sought after by universities and employers. Popular degree courses include Biochemistry, Biology, Ecology, Nursing and Zoology.

CAREERS:

Working in a science related career can be hugely rewarding due to the important and increasing life changing discoveries made within the industry. Biology is a fundamental subject for careers in the science and health industry. Pathways include Research, Teaching and Lecturing, Biotechnology, Nursing, Agriculture, Physiotherapy, Pharmaceutical Practice, Dentistry, Veterinary Science and the Medical Profession.

FACULTY : PNS

*For further information please contact
Deirdre O'Brien
Head of Biology*

A-Level Business

ENTRY REQUIREMENTS:

This course is open to students who have achieved a grade 5 in GCSE Maths and English Language or Literature

Description:

Students will gain an understanding of the commercial world. Students learn how small enterprises and multinational companies operate in local, national and global contexts and how these impact on business behaviour. Students are encouraged to keep up to date with world news to help them apply theory to real life. Assessment will consist of three externally assessed examinations worth 100% of the overall final grade.

Progression:

Students develop a wide range of business knowledge and transferable skills including analytical and critical thinking as well as strong communication and presentation skills which are highly valued by universities and employers. Many go directly into employment or an apprenticeship while others continue to study a degree in Business, Economics, Accountancy or Marketing.

CAREERS:

Business offers a valuable foundation for all career opportunities, with students potentially gaining employment at large international companies. Popular pathways include Finance, Marketing, HR, Operations, Sales and Marketing, Chartered Accountancy, Logistics and Distribution and Events Management.

FACULTY : BHE

*For further information please contact
Alex Allan
Quality Nominee for BTEC and Vocational Subjects,
Teacher of Business*

BTEC Level 3 National Extended Certificate in Business

ENTRY REQUIREMENTS:

This course is open to students who have achieved a grade 4 in GCSE Maths and English Language or Literature

Description:

Students will gain an in-depth understanding of business principles and practice. This practical course allows students the opportunity to engage with business people and employers, developing their skills, knowledge and confidence in a range of business environments and management activities. Assessment consists of four units of which 50% is coursework and 50% exam.

Progression:

Students develop a wide range of business knowledge and transferable skills including analytical and critical thinking as well as strong communication and presentation skills which are highly valued by universities and employers. Many go directly into employment or an apprenticeship while others continue to study a degree in Business, Economics, Accountancy or Marketing.

CAREERS:

Business offers a valuable foundation for all career opportunities, with students potentially gaining employment at large international companies. Popular pathways include Finance, Marketing, HR, Operations, Sales and Marketing, Chartered Accountancy, Logistics and Distribution and Events Management.

FACULTY : BHE

For further information please contact

Alex Allan

*Quality Nominee for BTEC and Vocational Subjects,
Teacher of Business*

A-Level Chemistry

ENTRY REQUIREMENTS:

This course is open to students who have achieved two grade 6s in GCSE Combined Science and a grade 5 in Maths
or a grade 6 in Chemistry and a second Science as well as a grade 5 in Maths

Description:

Students will develop practical skills whilst learning about the periodic table and energy, core organic chemistry, physical chemistry and transition elements, organic chemistry and analysis. Throughout the course practical endorsements enable students to further strengthen investigative and research skills for all topics.

Progression:

Students gain observational, investigative and problem-solving skills while developing a creative mind. These are all qualities which are highly sought after by universities and employers. Popular degree courses include Biochemistry, Chemical Engineering, Chemistry and Medicine.

CAREERS:

Working in a science related career can be hugely rewarding due to the important and increasing life changing discoveries made within the industry. Chemistry is relevant to many careers including Research, Teaching and Lecturing, Commerce, Science Journalism, Law, Engineering, the Pharmaceutical Industry and Management.

FACULTY : PNS

For further information please contact

Louise Davison

Director of Subject for Science

A-Level Computer Science

ENTRY REQUIREMENTS:

This course is open to students who have achieved a grade 6 in GCSE Computer Science and a grade 5 in Maths

Description:

Students will gain an understanding into the core academic principles of computer science. This course transfers classroom learning into creating real-world systems through the creation of an independent programming project. Students develop technical understanding and the ability to analyse and solve problems using computational thinking.

Progression:

Students develop creativity, analytical and problem-solving skills which are highly valued by universities and employers. Many students continue to study degrees in Computer Science, Engineering, Games Design or Information Science.

CAREERS:

With the widespread use of technology in the business world, employers are increasingly looking for employees with a wide range of computer science skills and knowledge. There is a wide range of job opportunities in the technology sector including Computer Programming, Games Design, Engineering, IT Specialism, Software Developing and Web Design.

FACULTY : MAIT

For further information please contact

Martin Corbishley

Director of Subject for Computer Science & ICT

BTEC Level 3 National Extended Certificate in Performing Arts (specialising in Dance)

ENTRY REQUIREMENTS:

This course is open to students who have achieved a merit in BTEC Level 2 Dance
or a grade 5 in GCSE Dance
or a formally recognised grade 4 (or equivalent) in a specific dance style

Description:

Students will complete five units, spending the majority of their time on dance, as the main specialism, with the opportunity to work on other performing arts areas. The course includes two mandatory units, one that is externally assessed. For the mandatory units students will work on a group performance workshop and a live performance. Students will then complete three optional units: choreography skills, contemporary dance, jazz dance and musical theatre.

Progression:

Students develop collaboration, choreography and creative skills which are highly valued by universities and employers. Many continue to study courses in Performing Arts or Choreography at university, a dance school or performing arts establishment.

CAREERS:

Working in the dance industry is competitive but also extremely rewarding. Popular pathways include Teaching, Choreography, Performing and Theatre.

FACULTY : PNS

For further information please contact

Francia Dickinson

Lead Teacher of Dance

A-Level Drama & Theatre

ENTRY REQUIREMENTS: This course is open to students who have achieved a grade 5 (or equivalent) in GCSE Drama or English *or* a recognised performance or theatre qualification

Description:

This course consists of two non-examination assessment components and one externally examined paper. Students will complete three components, titled: Devising, Text in a Performance and Theatre Makers in Practice. Over the course of the two years, students can decide to either be a performer or focus on the designing processes involved in the creation of a performance. All students will be exposed to a wide range of practitioners and will experiment with different styles of theatre. Two set texts will be studied and extracts from these plays will be performed as part of the concluding assessment. Finally, students will learn how to evaluate live theatre and consider multiple interpretations of a performance.

Progression:

Students develop communication and analysis skills and are able to maintain a critical argument and incorporate theory into their analysis. These skills are highly sought after by universities and employers. Many students continue to study a degree in English Literature or Drama at degree level.

CAREERS:

The theatre industry is very competitive, yet very rewarding. After completing a Drama and Theatre A-Level, popular career paths include Teaching, Performing, Directing and Public Speaking.

FACULTY : COMMS

*For further information please contact
Megan McLellan
Lead Teacher of Drama*

A-Level - English Language & Literature

ENTRY REQUIREMENTS: This course is open to students who have achieved a grade 6 in either GCSE English Language or Literature.

Description:

This course offers students opportunities to develop their subject expertise by engaging creatively, critically and independently with a wide range of texts. Using literary and linguistic concepts and methods, students analyse texts in a range of modes and genres, including F. Scott Fitzgerald's *The Great Gatsby*, Tennessee Williams' *A Streetcar Named Desire*, poetry by Seamus Heaney and the AQA Paris anthology. Students will develop skills as producers and interpreters of language by creating texts themselves and critically reflecting on their own processes of production. The coursework element allows students to explore research-based investigative writing on a linguistic area of their own choice.

Progression:

The variety of assessment styles used, such as re-creative writing, commentary writing, discursive essays and research-based investigative writing, allows students to develop a wide range of skills. These include the ability to read critically, analyse, evaluate and undertake independent research, which are invaluable for both further study and future employment. Many students continue to study a degree in English Literature and/or Language, Drama, Law and Journalism at degree level.

CAREERS:

English Language and Literature is relevant to most industries, opening up a diverse range of career options including Teaching, Journalism, Law, Marketing, Performing Arts, Management and Media.

FACULTY : COMMS

*For further information please contact
Laura Bond
Director of Subject for English*

A-Level French

ENTRY REQUIREMENTS:
This course is open to students who have achieved a grade 6 in GCSE French

Description:

Students will develop their linguistic skills alongside their understanding of the culture and society of countries where French is spoken.

Students will learn about social and technological changes alongside highlights of art, music and cinema. Students will explore the influence of the past on present-day French speaking communities.

Assessment tasks will be varied and cover listening, speaking, reading and writing skills.

Progression:

Students experience and develop communication and research skills as well as an understanding of another culture. These skills are highly valued by universities and employers. Many continue to study a degree or combined degree in French.

CAREERS:

An advanced knowledge of French enhances employment prospects in a variety of careers, both in Europe and further afield. Careers include Travel, Tourism, Teaching, Interpreting and Translation.

FACULTY : BHE

*For further information please contact
Sophie Allert
Director of Subject for Modern Foreign Languages*

A-Level Geography

ENTRY REQUIREMENTS:
This course is open to students who have achieved a grade 5 in GCSE Geography

Description:

Students will examine both human and physical geography, studying the relationship between human populations with their physical environment both locally and globally. The physical geography studies include the water and carbon cycles and the study of different environments. The human geography studies include the study of global systems, changing places and different environments and the impact humans have on these.

Progression:

Students gain the ability to evaluate data as well as analytical and communications skills which are highly valued by universities and employers. Many students continue to study a degree in Environmental Planning or Geography.

CAREERS:

There are a wide range of jobs geography graduates can go into. These include Advertising, Education, Environmental Management, Finance, Law, Marketing, Retail, Sales, Social/Health Services and Urban Planning.

FACULTY : BHE

*For further information please contact
Jordon Joseph
Head of Geography*

BTEC Level 3 National Extended Certificate in Health & Social Care

ENTRY REQUIREMENTS:

Gateway Pathway – This course is open to students who have achieved a minimum of three GCSEs at grade 4 as well as a grade 3 in Maths and English Language or Literature

Description:

Students will develop skills, techniques and attributes essential for successful performance in working life. Students investigate the role of effective communication within the health and social care sector, as well as exploring the importance of health and safety and human development.

Progression:

Students develop strong communication skills, as well as the ability to analyse and critically evaluate information. These skills are highly sought after by universities and employers. Many continue to study a BTEC National Foundation Diploma in Children's Play, Learning and Development which can lead to a Foundation Degree in Early Years, Playwork or Education. Further Level 3 qualifications alongside A-Level Biology can lead to a BSc (Hons) in Nursing or a BTEC National Extended Diploma in Applied Science which could lead to a BSc (Hons) in Biomedical Science.

CAREERS:

Careers within the Health and Social Care Industry can be extremely satisfying as most job roles involve helping others. Popular pathways include Nursing and Other Health Related occupations such as Physiotherapy, Occupational Therapy, Early Years Roles, Social Services, Charity, Civil Service Administration, Counselling, Lecturing, Health Promotion Specialism, Health Service Management and Local Government Administration.

FACULTY : PNS

*For further information please contact
Corinna Stanley
Lead Teacher of Health and Social Care*

A-Level History

ENTRY REQUIREMENTS:

This course is open to students who have achieved a grade 5 in GCSE History and English Language or Literature

Description:

Students will gain an appreciation of the world around them and develop their enquiry, communication and interpretation skills, as well as the use of historical terminology and analytical skills. Topics include Modern Britain and the development of modern Russia, along with a piece of coursework on the 17th Century. Engaging in reading, writing and revision outside of lessons are prerequisites for the course.

Progression:

Students develop a range of communication, organisation and analytical skills which are highly sought after by university and employers. History is a designated facilitating subject for all Arts (essay based) degrees. Many continue to study a degree in Archaeology, History, Law or Politics.

CAREERS:

Working in a history related career can be hugely rewarding due to the discoveries made within the industry. Popular pathways include Accountancy, Business, Education, Law, Administration and Marketing.

FACULTY : BHE

*For further information please contact
Fiona Rowe
Head of History*

OCR Cambridge Technicals in Information Technology (Level 3)

ENTRY REQUIREMENTS:

This course is open to students who have achieved a grade 5 in GCSE Computer Science
or a merit in Interactive Media
or a grade 5 in GCSE Maths and English Language or Literature
or a merit in an equivalent Level 2 IT qualification

Description:

Students will develop their knowledge, understanding and skills of the principles of IT and Global Information Systems. Students also gain an insight into the IT sector as they investigate the pace of technological change, IT infrastructure, the flow of information on a global scale, and the importance of legal and security considerations.

Progression:

Cambridge Technicals provide students with a strong base for progression on to an apprenticeship, university or work. Many students continue to study a degree in Computer Science, Engineering, Games Design or Information Science.

CAREERS:

With the widespread use of technology in the business world, employers are increasingly looking for employees with a wide variety of IT skills and knowledge. There is a wide range of job opportunities in the technology sector including Cyber Security, Network Management and App Development. This course equips students with the technical and practical skills for a career within this exciting and fast-moving industry.

FACULTY : MAIT

*For further information please contact
Martin Corbishley
Director of Subject for Computer Science & ICT*

A-Level Maths

ENTRY REQUIREMENTS:

This course is open to students who have achieved a grade 6 in GCSE Maths

Description:

Students will extend their knowledge into areas of pure maths, statistics and mechanics. In pure maths, students are introduced to calculus and logarithms as well as consolidating their application of algebraic manipulation and trigonometry. In statistics, students test hypotheses using the normal and binomial distributions, solve probability problems and represent data. In mechanics, students resolve forces, apply Newton's laws of motion and find the centre of mass of an object.

Progression:

Students develop problem-solving skills as well as the ability to interpret solutions and communicate their interpretation effectively which are qualities highly sought after by universities and employers. Many continue to study a degree in Maths, Economics, Engineering or Architecture.

CAREERS:

Maths is relevant to many careers including Engineering, Accountancy, Computer Science and Economics. Students in such areas as Anthropology, Sociology, and Psychology, as well as Law, Business and Medicine, also benefit from a solid background in Maths.

FACULTY : MAIT

*For further information please contact
Urvish Patel
Director of Subject for Maths*

A-Level Further Maths

ENTRY REQUIREMENTS:

This course is open to students who have achieved a grade 7 in GCSE Maths (Students must also choose A-Level Maths)

Description:

Students will extend their knowledge into areas of pure and decision maths as well as mechanics. In pure maths, students will be introduced to complex numbers, matrices and 3D vectors as well as solving differential equations and working with polar coordinates. In decision maths, students will apply different algorithms to find the shortest route around a network and solve linear programming problems. In mechanics, students will solve work, energy and power problems and apply Newton's laws of motion in collisions.

Progression:

This course is for those students who have a real strength and passion for this subject and wish to study an area of Maths at university, or a closely related degree such as Engineering. Students develop the knowledge to make logical and reasoned decisions in solving problems in a variety of contexts, and communicate the rationale for these decisions clearly which are qualities highly sought after by universities and employers. Many continue to study a degree in Maths, Economics, Engineering or Architecture.

CAREERS:

Maths is relevant to many careers including Engineering, Accountancy, Computer Science and Economics. Students in such areas as Anthropology, Sociology, and Psychology, as well as Law, Business and Medicine, also benefit from a solid background in Maths.

FACULTY : MAIT

*For further information please contact
Urvish Patel
Director of Subject for Maths*

A-Level Media

ENTRY REQUIREMENTS:

This course is open to students who have achieved a grade 5 in Media or Film
or a grade 5 in English Language
or a grade 6 in Art or Photography

Description:

Students will develop both analytical and production skills in media. Students have the opportunity to study a range of media texts ranging from film, magazine, newspapers, social media, music videos and gaming. They will study these in relation to media terminology, representation, institutions and audiences, as well as looking at how media evolves over time and globally. There is the opportunity for practical production work which will allow students to produce, edit and market their own production with opportunities to develop their skills in print, online, radio, TV and film.

Progression:

Students gain strong analytical, creative and research skills which are qualities highly sought after by universities and employers. Many continue to study a degree in Film Production, Illustration, Journalism, Marketing, Media, Communications and Photography

CAREERS:

Technological developments have made the media industry competitive, fast-paced and constantly changing, opening up many careers including Publishing, Broadcasting, TV and Film, Advertising, Marketing and Journalism as well as the Gaming Industry.

FACULTY : COMMS

*For further information please contact
Laurence Woodcock
Assistant Principal responsible for Media*

A-Level Music

ENTRY REQUIREMENTS:

This course is open to students who have achieved a grade 5 in GCSE Music
or a grade 5 (ABRSM) or equivalent on an instrument

Description:

This course is divided into three clear elements. Students will take part in a public performance of one or more pieces, performed as a recital (minimum length 8 minutes). The performance can be playing or singing solo, in an ensemble, improvising, or realising music using music technology. Students will produce two compositions, one to a brief set by the examination board and one free composition. Students will also have six areas of study, each with three set works.

Progression:

Students gain strong creative and performance skills which are qualities highly sought after by universities and employers. Many continue to study a degree in Acting, Music, or Sound Engineering and Production.

CAREERS:

Working in the music industry can be hugely rewarding. Popular pathways include Professional Musician, Record Producing, Teaching and Lecturing, Music Journalism, Arts Administration and Composing.

FACULTY : AMID

*For further information please contact
Clive Wears
Director of Subject for Music*

A-Level Physics

ENTRY REQUIREMENTS:

This course is open to students who have achieved two grade 6s in GCSE Combined Science and a grade 5 in Maths
or a grade 6 in Physics and a second Science as well as a grade 5 in Maths

Description:

Students will cover the basis of how things work, from the constituent parts of atoms out to the extent of the universe. Students will gain an understanding of mechanics, electricity, waves, quantum physics, nuclear, particle and medical physics with the addition of cosmology. Students will integrate the concepts studied with a range of practical experiments throughout each topic giving the course both an academic and practical focus.

Progression:

Students develop problem solving and numeracy skills which are highly valued by employers and universities which are essential for access to Physics and Engineering courses. Many continue to study a degree in Medicine, Law and Economics because of the thinking skills and problem solving involved. There is significant subject cross-over with Maths and Chemistry.

CAREERS:

Working in a science related career can be hugely rewarding due to the important and increasing life changing discoveries made within the industry. Popular pathways include Physics, Maths and Engineering, Pyrotechnician, Astrophysicist, Computer Games Designer and Meteorologist. Advanced apprenticeships in industry which at present includes aerospace, nuclear power generation and electrical power distribution.

FACULTY : PNS

*For further information please contact
Frederick Hagan
Head of Physics*

A-Level Psychology

ENTRY REQUIREMENTS:

This course is open to students who have achieved two grade 5s in GCSE Combined Science and a grade 5 in Maths and English Language or Literature
or a grade 5 in Biology, Maths and English Language or Literature

Description:

Students will design and carry out their own pieces of psychological research. The psychology studies include learning about the psychological explanations for the Holocaust, how memory works and understanding understand the problems psychologists face when having to diagnose disorders. The students will also consider the impact of isolation on upbringing and also why people obey authority figures.

Progression:

Students develop Psychology equips students with a number of valuable transferable skills including being able to communicate effectively using appropriate language, to interpret and critically assess scientific data, and to research and critically evaluate a range of sources. Many continue to study a degree in Psychology which is studied as a natural science alongside Chemistry, Biology, Physics and Maths and is often paired with a Science or Social Science such as Sociology or Criminology.

CAREERS:

A wide range of career options are open to Psychology graduates including Marketing, the health sector, as well as Sports or Criminology. With further training, Psychologists can progress into careers such as Counselling, Teaching, Clinical Psychology, Forensic Psychology, Educational Psychology or Occupational Psychology.

FACULTY : PNS

For further information please contact

Elaine Wood

Director of Subject for Psychology

BTEC Level 3 National Extended Certificate in Applied Psychology

ENTRY REQUIREMENTS:

This course is open to students who have achieved two grade 4s in GCSE Combined Science and a grade 4 in Maths and English Language or Literature
or a grade 4 in Biology, Maths and English Language or Literature

Description:

Students will examine psychological approaches and applications, health Psychology and an introduction to Psychopathology.

Students will also investigate how Psychological Research is carried out. There will be regular emphasis on problem solving as well as challenging students' resilience and independence.

Progression:

Students develop communication skills in a range of theoretical and practical settings. Psychology when combined with other relevant qualifications, could progress onto degree courses such as Occupational Health, Child Psychology, Sport Psychology.

CAREERS:

A wide range of career options are open to Psychology graduates including Marketing, the health sector, as well as Sports or Criminology. With further training, Psychologists can progress into careers such as Counselling, Teaching, Clinical Psychology, Forensic Psychology, Educational Psychology or Occupational Psychology.

FACULTY : PNS

For further information please contact

Elaine Wood

Director of Subject for Psychology

OCR Cambridge Technicals in Applied Science (Level 3)

ENTRY REQUIREMENTS:

This course is open to students who have achieved two grade 5s in Combined Science or two grade 5s in Triple Science, as well as a grade 4 in GCSE Maths.

Description:

The Applied Science course has been developed to give students the skills and knowledge they will need to deal with the challenges they may face whilst working in or studying in the field of Science. Students will develop professional and practical skills through carrying out real experiments and research, as well as the theoretical knowledge and understanding to underpin these skills. Applied Science covers a broad range of topics and skills from Chemistry, Biology and Physics. There is also a large amount of practical work in this subject which will enable students to develop excellent laboratory skills and work safely and accurately in a work-based environment. This course is assessed using both coursework and exams.

Progression:

Studying Applied Science gives learners the opportunity to develop their knowledge and understanding of scientific principles and a range of skills and techniques for a successful career in Science or related industries. The qualification also offers learners an opportunity to develop transferable skills such as problem solving, research and communication as part of their learning.

CAREERS:

Applied Science students will develop many skills that make them desirable employees in a diverse range of industries such as the research and development sector, financial sector, engineering, construction and computing.

FACULTY : PNS

For further information please contact

Louise Davison

Director of Subject for Science

A-Level Spanish

ENTRY REQUIREMENTS:

This course is open to students who have achieved a grade 6 in GCSE Spanish

Description:

Students will develop their linguistic skills alongside their understanding of the culture and society of countries where Spanish is spoken. Students will learn about social and technological changes alongside highlights of art, music and cinema. Students will explore the influence of the past on present-day Spanish speaking communities. Assessment tasks will be varied and cover listening, speaking, reading and writing skills.

Progression:

Students experience and develop communication and research skills as well as an understanding of another culture. These skills are highly valued by universities and employers. Many continue to study a degree or combined degree in Spanish.

CAREERS:

An advanced knowledge of Spanish enhances employment prospects in a variety of careers, both in Europe and further afield. Careers include Travel, Tourism, Teaching, International trade, Interpreting and Translation.

FACULTY : COMMS

For further information please contact

Sophie Allert

Director of Subject for Modern Foreign Languages

BTEC Level 3 National Extended Certificate in Sport

ENTRY REQUIREMENTS:

Gateway Pathway – This course is open to students who have achieved a minimum of three GCSEs at grade 4 as well as a grade 3 in Maths and English Language or Literature

Description:

Students will develop a wide range of skills to analyse, assess and evaluate the physiology, health, well-being and performance through laboratory and fitness-based tests.

The course also covers progression in the sports industry, giving students a broad and in-depth knowledge of the sector. Students will cover three mandatory units and one optional unit.

Progression:

Students gain body awareness, teamwork, communication and leadership skills which are highly valued by universities and employers. Many continue to study one of the many degrees relating to sports including Sport Studies and Business, Sport Psychology, Sports Education and Special and Inclusive Education and Sport and Exercise Science.

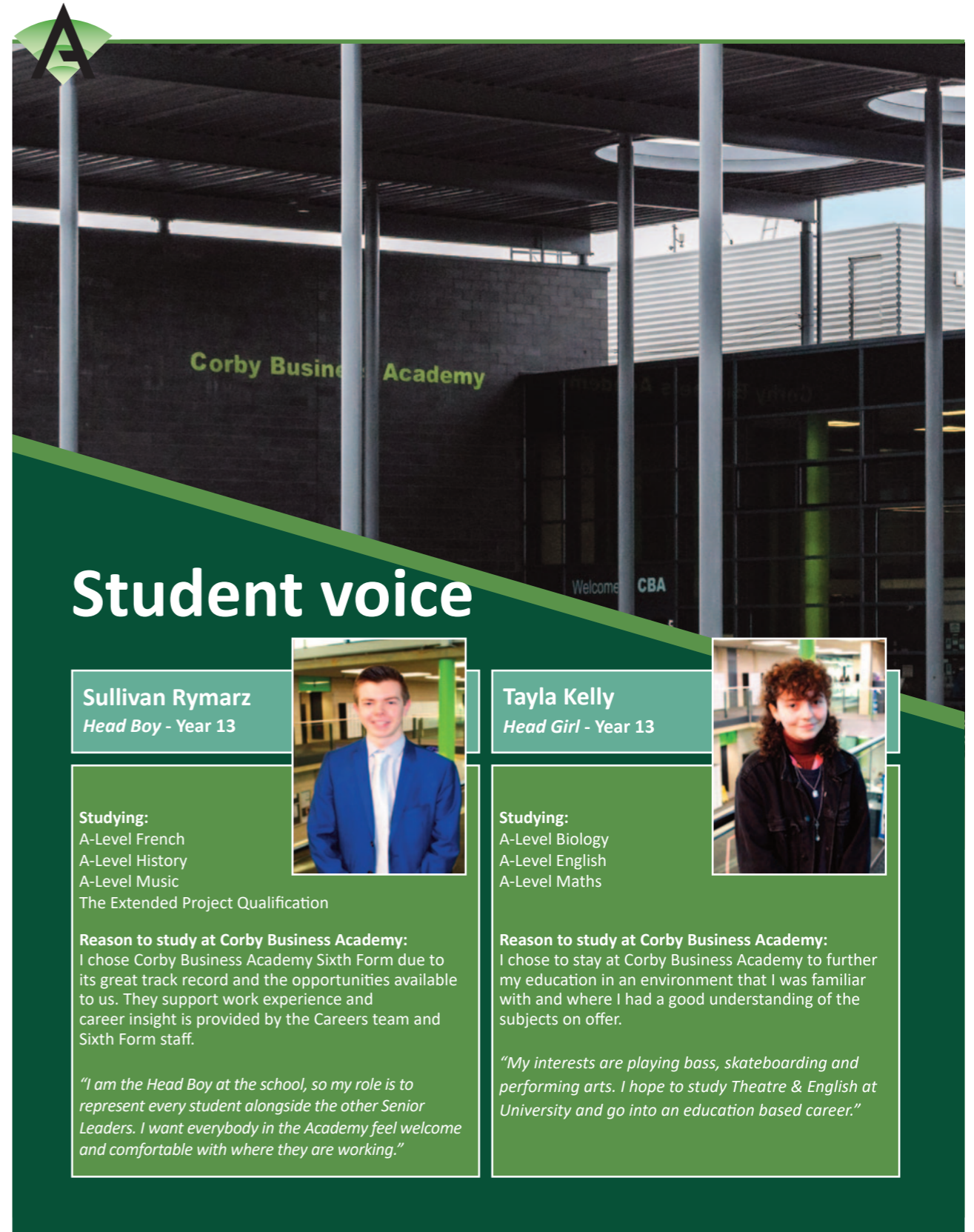
CAREERS:

Working in the sports industry can be hugely rewarding. Popular pathways include Teaching, Physiotherapy, Fitness, Education Lecturing, Sports Psychology, Sports Nutrition, Sports Journalism and Coaching.

FACULTY : PNS


*For further information please contact
Stuart Wall*

*Assistant Principal responsible for
Physical Education*



Student voice

Sullivan Rymarz
Head Boy - Year 13




Studying:
A-Level French
A-Level History
A-Level Music
The Extended Project Qualification

Reason to study at Corby Business Academy:
I chose Corby Business Academy Sixth Form due to its great track record and the opportunities available to us. They support work experience and career insight is provided by the Careers team and Sixth Form staff.

"I am the Head Boy at the school, so my role is to represent every student alongside the other Senior Leaders. I want everybody in the Academy feel welcome and comfortable with where they are working."

Tayla Kelly
Head Girl - Year 13



Studying:
A-Level Biology
A-Level English
A-Level Maths

Reason to study at Corby Business Academy:
I chose to stay at Corby Business Academy to further my education in an environment that I was familiar with and where I had a good understanding of the subjects on offer.

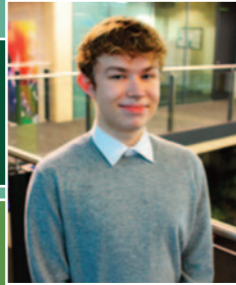
"My interests are playing bass, skateboarding and performing arts. I hope to study Theatre & English at University and go into an education based career."

STUDENT VOICE - 27



Michal Wasilewski

Deputy Head Boy
Year 13



Studying:

A-Level Maths
A-Level Physicals
The Extended Project Qualification

Reason to study at Corby Business Academy:

I chose to study Sixth Form at Corby Business Academy because of the rigorous and innovative standards of teaching and learning. I value the independent, high quality career education and above all I love the diverse range of extracurricular activities.

"I felt this was the right pathway for me because of my strong background in critical thinking and problem solving. As Deputy Head Boy I strive to resolve student concerns, driving necessary changes for the school culture."

Josh Haigh

Deputy Head Boy
Year 13



Studying:

A-Level Biology
A-Level Business
A-Level Chemistry
The Extended Project Qualification

Reason to study at Corby Business Academy:

The reason for choosing Corby Business Academy for A-Level is because I am comfortable with the environment, and all teachers are friendly and helpful.

"Through my role as Deputy Head Boy, I hope to promote the wide range of activities available for you through your time at the Academy."

Ronni Hnatejko

Deputy Head Girl
Year 13



Studying:

A-Level Maths
A-Level Further Maths
A-Level Physicals

Reason to study at Corby Business Academy:

I chose to stay at Corby Business Academy for Sixth Form because it was a familiar atmosphere that I wanted to keep attending. The Maths department at Corby Business Academy is very strong, and one of the leading reasons why I chose to continue my education here.

"As Deputy Head Girl, I want to promote student opinions and change."

Bethany Hope

Deputy Head Girl
Year 13



Studying:

A-Level English Language
A-Level English Literature
A-Level Geography
A-Level Psychology

Reason to study Corby Business Academy:

I chose to stay at Corby Business Academy because I wanted to stay in the same environment where I knew all of the teachers and what the school stands for.

"Through my role as Deputy Head Girl, I want to be someone who students can come and talk to."



Camille Wooton

Ambassador for
Student Voice Year 13



Studying:

A-Level English
A-Level History
BTEC Health and Social Care

Reason to study at Corby Business Academy:

I initially wanted to go to college however, Sixth Form offered a wider range of study opportunities and will provide me with more jobs prospects and university offers in the future.

"My role as an ambassador is to help around the Academy and to take in any advice from students. I will also listen to the students and help them with lessons or improving the school."

Trinity Kingston

Ambassador for
Mental Health
Year 13



Studying:

A-Level Biology
A-Level English
A-Level Maths
A-Level Psychology

Reason to study at Corby Business Academy:

I chose to stay in Sixth Form at Corby Business Academy to continue my favourite subjects and to learn to become a more independent student.

"As a mental health ambassador, I want to support and help with any student concerns."

Nylissa Lay

Ambassador for
Mental Health
Year 13



Studying:

A-Level Biology
A-Level Geography
A-Level Psychology

Reason to study at Corby Business Academy:

I chose to stay on for Sixth Form at Corby Business Academy because I have a good relationship with my subject teachers and wish to study my interests at a higher level.

"My interests are making and playing music, spending time with friends and family."

Erica Icke

Ambassador for Sport
Year 13



Studying:

A-Level Geography
A-Level Psychology
BTEC Sport

Reason to study at Corby Business Academy:

I chose to stay in Sixth Form as I am familiar with the teachers and I can carry on the subjects I enjoy. It will also help take me to study in university.

"I enjoy playing netball and socialising with friends."



Sixth Form Admissions

Entry requirements

The entry requirements for external students will be the same as for continuing students. All students must complete a Corby Business Academy application form.

There are two areas within the Sixth Form for students to apply for:

The Pathway Courses:

To participate in The Level 3 Pathway students must achieve:

- a total GCSE/Level 2 points entry (best 8 subject grades) of 40 points*
- a grade 5 in Maths and English Language or Literature
- each subject specific entry requirement*

The Gateway Courses:

To participate in The Level 3 Pathway students must achieve:

- a total GCSE/Level 2 points entry (best 8 subject grades) of 32 points*
- a grade 3 in Maths and English Language or Literature
- each subject specific entry requirement*

Students will be expected to retake GCSE Maths and/or English as part of this course.

NB. The maximum intake to The Gateway Course is 25 students

**Course entry requirements and points allocation are outlined in our Sixth Form prospectus.*

Published Admission Number PAN)

The Academy offers 25 places to students external to the Academy. Where there are more applications than places, the following oversubscription criteria will be applied:

Following the admission of children/young people with an Education, Health and Care Plan (EHCP) that name the Academy and if external applications exceed the PAN, oversubscription criteria will be applied:

- a) Looked After Children and all previously Looked After Children.*
- b) Children with a sibling link.**
- c) Distance between home address and the Academy as measured in a straight line from the child's home to the Main Entrance of the School site.***

Published Admission Number PAN) continued

In the event of a tie (i.e. two addresses are exactly the same distance from the Academy) a place will be awarded on a random allocation basis. This will be subject to independent verification.

The Academy operates a waiting list for Year 12 entry for the first academic year of admission. If a place is available in Year 12 then it will be filled by a place on the waiting list subject to the conditions set out in the policy for entry to Year 12. Parents/carers must notify the Academy if they wish their child to be on the waiting list.

Parents/carers have the right to appeal an admission decision by the Academy. All appeals are heard by the Independent Appeals Panel in accordance with the School Appeals Code (2012).

Additional information

Definitions

* Looked After Children and all previously Looked After Children

• A Looked After Child is a child who is (a) in the care of a local authority or (b) being provided with accommodation by a local authority in the exercise of their social services functions (see section 22(1) Children Act 1989) at the time of making an application to a school.

• A previously Looked After Child is a child who was looked after but ceased to be so because the child was adopted (under the Adoption Act 1976 or Adoption and Children Act 2002) or become the subject of a child arrangements order (section 8 Children Act 1989) or a special guardianship order (section 14A Children Act 1989).

• A previously Looked After Child is a child who appears to the Admission Authority to have been in state care (i.e. in the care of or accommodated by a public authority, religious organisation or any other provider whose sole/main purpose is to benefit society) outside of England but ceased to be so as a result of being adopted. Evidence from the relevant social services department may be requested to determine eligibility under this criterion.

** Sibling link

A sibling link will arise where one of the conditions in each of A and B are satisfied.

Condition A:

- A brother or sister living at the same address, who shares the same parents;
- A half-brother or half-sister living at the same address, where two children share one common parent;
- A step brother or step sister living at the same address, where two children are related by a parent's marriage;
- Adopted or fostered children living in the same household.

Condition B:

For the sibling link to apply, one of the siblings must be a registered pupil at the named Academy at the time of application and is expected to remain on roll at the point of admission.

Additional Sibling Link Information

Although the definition of "Sibling" does not specify whether the Sibling should be younger or older, it should be noted that for admissions to the primary or secondary phases of education, the sibling link will only be valid where the older sibling is on roll at the academy at the time of application and is expected to be still on roll at the time of admission. For post-16 applicants only, the sibling link can arise where there is an older or younger sibling at the named Academy at the point of application and expected to be on roll at the point of admission.

*** Home address

Where a child lives or their "home address" will be determined at the time of application. The child's home address is defined as the address at which the child normally resides with their parent/carer. If a child lives with their separated parents for different parts of the week, the Trust will treat their home address as the place the child sleeps for the majority of the school week. If the child spends equal periods at the two addresses, the parents must agree to nominate one address to be taken as the home address. Documentary evidence of ownership or rental agreement may be required together with proof of actual permanent residence at the property concerned. Places cannot be allocated on the basis of intended future changes of address unless house moves have been confirmed through the exchange of contracts or the signing of a formal lease agreement. The Trust reserves the right to seek further documentary evidence to support your claim to residence. The Trust will withdraw any place allocated if the address is found to be false.

The definitions to be applied are those set out in the BWT Admissions Arrangements.

Please see link below for further details:
<https://bit.ly/BWTPolicies>

To apply for a place at Corby Business Academy's Sixth Form please complete our online application form:
<https://forms.office.com/r/5V4b1AC1Xm>

This page also contains further information about our Sixth Form including virtual tours and the Principal's welcome.

Alternatively, please visit our 'Open Evening Virtual Event' page under the Sixth Form area of the website.

PLEASE NOTE THAT THE DEADLINE FOR APPLICATIONS IS FRIDAY 11TH FEBRUARY 2022

Alumni

Psychological and Behavioural Sciences Degree at Cambridge University

Chantal is our most recent Oxbridge student, after leaving the Academy in 2019 with two A*s in Art and Psychology, an A in English Literature and a B in Maths at A-Level. She is currently in her second year of studying a degree in Psychological and Behavioural Sciences at the University of Cambridge.

She said: "I struggled between doing English or Psychology at university, but in the end, I chose to do Psychology because of the flexibility of areas I can choose to study in at Cambridge, for example last year I did a mix of psychology, politics and biological anthropology.

"I am still very much enjoying being able to be flexible in my course, this year I am focusing on criminology and neurobiology alongside my psychology papers, this course means I do not have to be narrow in my profession and I get a chance to explore other areas before honing in on one or two.

"At the moment I am looking into either doing a master's here at Cambridge or completing a law conversion course. I then want to move towards a career in law or clinical psychiatry. I am really interested in the criminal justice system and how it judges, treats and assesses people, it also has some bridges to psychology, for example how mental illness is addressed in the system. On the other hand, my interest in mental illness also has strong ties to clinical psychiatry and how mental illness can manifest itself behaviourally and cognitively.



"I enjoyed English Literature, Psychology and Art equally at A-Level. Each is different in its own respect and so each provided a break from the problems/ stresses of the others. The care and immense help of all of the teachers at Corby Business Academy kept me interested and motivated in my subjects greatly. Teachers at A-Level that motivated me and will forever be remembered by me are Ms Anderson, Ms Barrett, Miss Boyd, Miss Wood and Ms Moore – without these people I would not be where I am today.

"I moved schools a lot when I was younger, and Corby Business Academy was the school I stayed longest in. The people I met, students and teachers will forever hold a place in my heart and I am forever grateful for the help and guidance I was given by them all.

"When I was still at secondary school, I completed work experience at the local dementia day care centre and also volunteered for our local Mind charity group. These two experiences greatly bolstered my understanding of psychological phenomena and its direct experience. Understanding first-hand what you are getting yourself into is important. This is also important for understanding the university experience itself - I went to two summer schools, one at Nottingham and one at Cambridge, both were crucial in giving me first-hand experience of a university environment.

"To any prospective Sixth Form students, the jump between University and Sixth Form is really not as daunting as it seems. The most important thing I would say is that you should do what you enjoy no matter what. If you choose something that you don't enjoy it will be really difficult to keep motivated to study and pursue this subject. Always do what you enjoy and look after your mental health above all else."

Please visit our 'Alumni' page under the Sixth Form area of the website to read more former student profiles.

Contact Information

We encourage students to talk through their potential choices with the subject teacher.

Ralph Franklin

Vice Principal responsible for Sixth Form
Ralph.Franklin@corbybusinessacademy.org

Matthew Smith

Deputy Director of Sixth Form
Matthew.Smith@corbybusinessacademy.org

SUBJECT DIRECTORS:

Emily Boyd

Director of Subject for Art and Photography
Emily.Boyd@corbybusinessacademy.org

Alex Allan

Quality Nominee for BTEC and Vocational Subjects,
Teacher of Business
Alex.Allen@corbybusinessacademy.org

Martin Corbishley

Director of Subject for Computer Science and ICT
Martin.Corbishley@corbybusinessacademy.org

Deirdre O'Brien

Head of Biology
Deirdre.O'Brien@corbybusinessacademy.org

Francia Dickinson (Academy SENCo)

Lead Teacher of Dance
Francia.Dickinson@corbybusinessacademy.org

Laura Bond

Director of Subject for English
Laura.Bond@corbybusinessacademy.org

Megan McLellan

Lead Teacher of Drama
Megan.McLellan@corbybusinessacademy.org

Jordon Joseph

Head of Geography
Jordon.Joseph@corbybusinessacademy.org

Corinna Stanley

Lead Teacher of Health and Social Care
Corinna.Stanley@corbybusinessacademy.org

Fiona Rowe

Head of History
Fiona.Rowe@corbybusinessacademy.org

Urvish Patel

Director of Subject for Maths
Urvish.Patel@corbybusinessacademy.org

Laurence Woodcock

Assistant Principal responsible for Media
Laurence.woodcock@corbybusinessacademy.org

Sophie Allert

Director of Subject for Modern Foreign Languages
Sophie.Allert@corbybusinessacademy.org

Clive Wears

Director of Subject for Music
Clive.Wears@corbybusinessacademy.org

Frederick Hagan

Head of Physics
Frederick.Hagan@corbybusinessacademy.org

Elaine Wood

Director of Subject for Psychology
Elaine.Wood@corbybusinessacademy.org

Louise Davison

Director of Subject for Science
Louise.Davison@corbybusinessacademy.org

SENIOR LEADERSHIP TEAM:

Simon Underwood

Principal
Simon.Underwood@corbybusinessacademy.org

Kerry Prior

Vice Principal
Kerry.Prior@corbybusinessacademy.org

Lisa Hawkins

Vice Principal
Lisa.Hawkins@corbybusinessacademy.org

Amy Harris

Assistant Principal
Amy.Harris@corbybusinessacademy.org

Charlie Gavin

Assistant Principal
Charlie.Gavin@corbybusinessacademy.org

Heather Thompson

Assistant Principal
Heather.Thompson@corbybusinessacademy.org

Heidi Bird

Assistant Principal
Heidi.Bird@corbybusinessacademy.org

Laurence Woodcock

Assistant Principal
Laurence.Woodcock@corbybusinessacademy.org

Stuart Wall

Assistant Principal responsible for Physical Education
Stuart.Wall@corbybusinessacademy.org



Student and Parent/Carer Information Notes





Corby Business Academy

Academy Way, Gretton Road
Corby, Northamptonshire NN17 5EB

T 01536 303120

E enquiries@corbybusinessacademy.org

Ralph.Franklin@corbybusinessacademy.org

Matthew.Smith@corbybusinessacademy.org